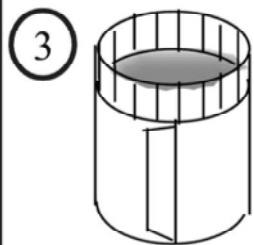
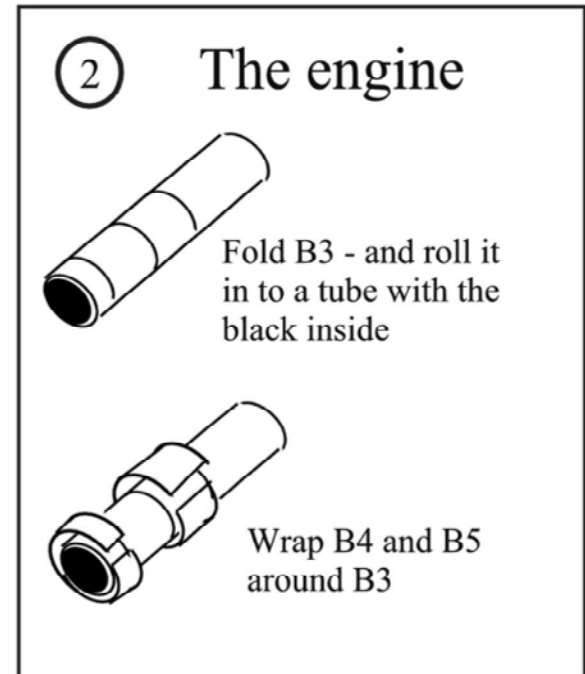
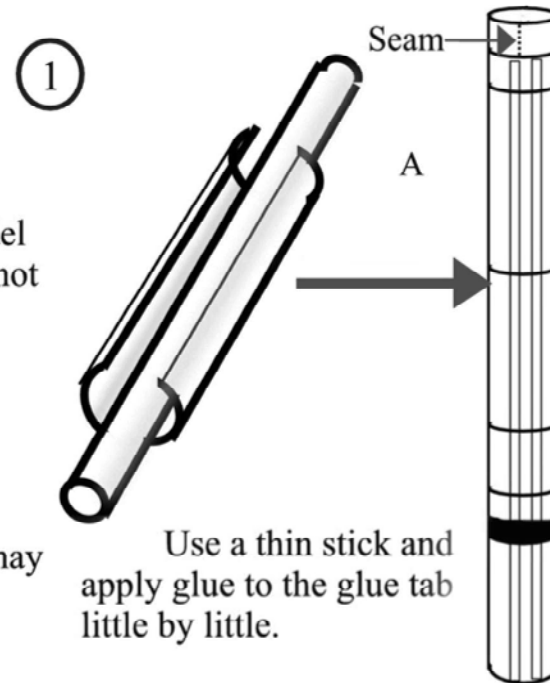


Although this is a small model consisting of few parts, it is not a beginners model.

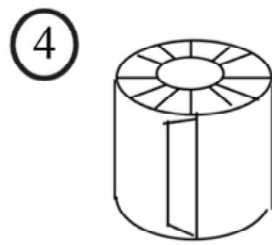
The most difficult part is to roll part A into a tube.

Print more than one copy of the model sheet, because it may not succeed in the first attempt.

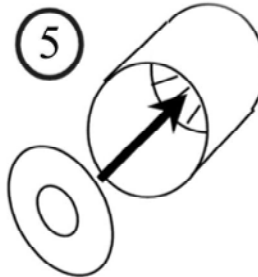


Roll part B1 to cylinder. Print in the inside - gluetab on the outside.

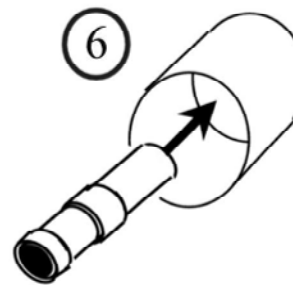
Make sure, that it fits very precise in to part A



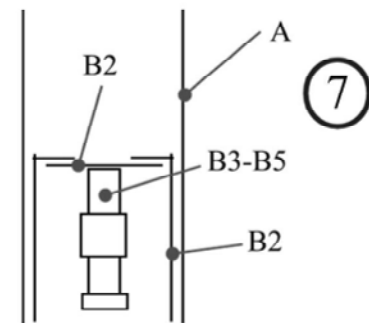
Fold down the gluetabs at the top.



Glue part B2 in to part B1 with the printed side down.



Glue the engine inside B1 to B2.



Glue the completed enginesection in to the rear end of A.