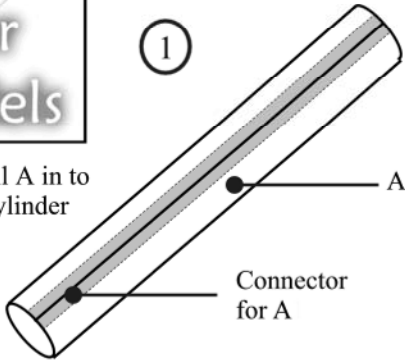




# Instructions for Vanguard TV-0 in scale 1:96

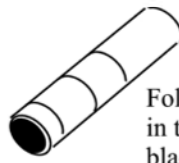
①

Roll A in to a cylinder



②

## The engine

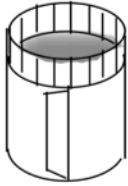


Fold B3 - and roll it in to a tube with the black inside

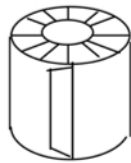


Wrap B4 and B5 around B3

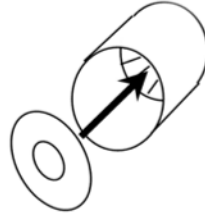
③



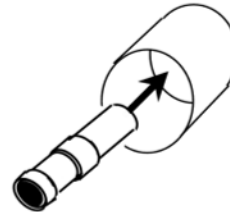
Roll part B1 to cylinder. Print in the inside - gluetab on the outside.



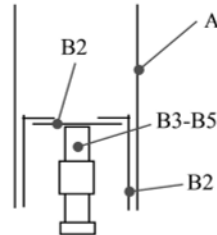
Fold down the gluetabs at the top.



Glue part B2 in to part B1 with the printed side down.



Glue the engine inside B1 to B2.

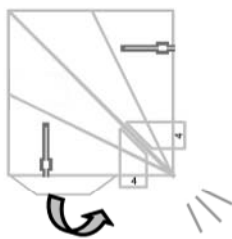


Glue the completed enginesection in to the rear end of A.

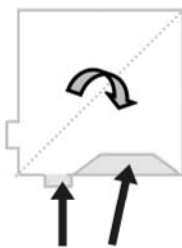
Make sure, that it fits very precise in to part A

③

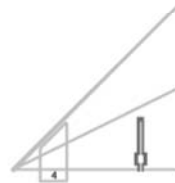
## The fins



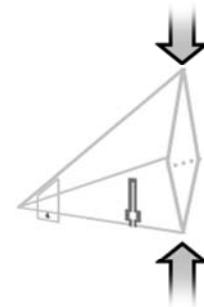
Score along the red lines, cut out and then fold the glue tab backwards.



Ad glue here on the back of the part.

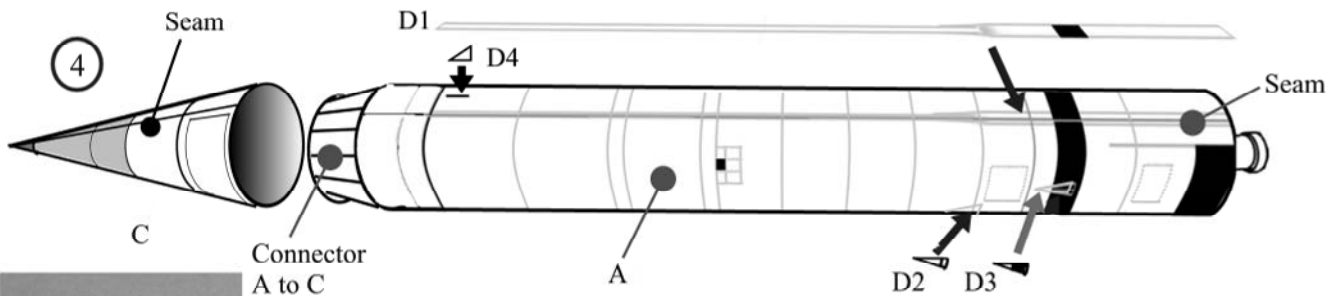


Then fold in to a flat delta fin.



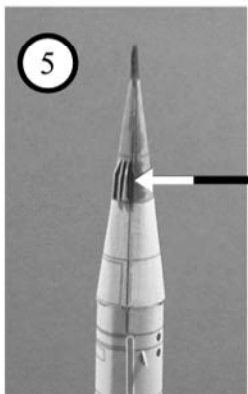
Then gently press the fin into shape. Use template G as guidance.

④

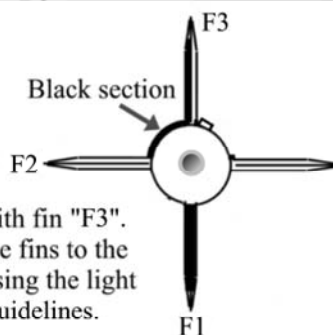


⑤

Glue the 6 reentry probes (D5) on each side of the cone.



⑥



Start with fin "F3". Glue the fins to the body using the light green guidelines.

Joy's 喜 Toys

©Joy Cohn and Niels Jahn Knudsen  
All rights reserved 2006.

www.geocities.com/nielspapermodels